

Beeliar Primary School Annual Report 2024



Wanjoo

*Nurturing Students who
Belong, Persevere and Succeed*

Reconciliation Vision

Beeliar Primary School is committed to contributing actively to reconciliation between Aboriginal and Torres Strait Islander peoples and non-Indigenous people. We aspire for students to be lifelong advocates of reconciliation, through teaching and modelling respect and empathy.

Beeliar Primary School will acknowledge and respect the significance of the local Beeliar Boodjar to Noongar people - past, present and emerging. The Beeliar Primary School Community will be provided opportunities to develop their understanding of the importance of reconciliation to all Australians and prepare students to become advocates for, and participants in, reconciliation.

At Beeliar, we are committed to truth-telling and being active participants in recognising and sharing the true histories of Australia and Aboriginal and Torres Strait Islander peoples' perspectives within our classrooms.

ACKNOWLEDGEMENT STATEMENT

We respectfully acknowledge the past and present traditional custodians of this land on which we are meeting, the Whadjuk people of the Noongar nation. It is a privilege to be standing on this beautiful country, Beeliar Boodja. We also acknowledge the contributions of Aboriginal Australians and non-Aboriginal Australians to the education of all children and people in this country we all live in, and share together, Australia. We pay our respect to the Elders past and present, and extend that respect to all Aboriginal and Torres Strait Islander peoples today.



Principal's Report

Welcome to the Beeliar Primary School 2024 Annual Report.

Beeliar Primary School celebrated 25 years this year, and our school and community came together to celebrate this milestone. The event was highly enjoyed by all and set the direction for us for the next 25 years. See more on this in special events.

2024 was my first year as Principal at Beeliar Primary School (BPS) and provided me an opportunity to get to know staff, students and community members and, through consultation, set the direction for our school for the future. The staff and School Board worked together to review the outgoing Business Plan and develop our new iteration which is located on our website for your viewing. A focus on quality teaching and learning and support for all our students to achieve their potential forms the foundation of our direction. The School Board, P&C and I will work together to continue to foster a strong community partnership and strong relationships, working together to achieve our targets and vision for the school.

I have the privilege as Principal to visit every class in our school and what I see every day is high quality education for every student.

We will continue our work in 2025 to bring to life our moral purpose which is '*Nurturing Students who Belong, Persevere and Succeed*'.

In 2024 the Reconciliation Action Plan (RAP) Committee finalised the Beeliar PS reconciliation vision, which is an important part of the work we do each and every day here at Beeliar.

I would like to thank our community partnerships; Tino's Pizza, Cockburn Cement, IGA Beeliar and the P&C for their support and sponsorship of our events throughout the year.

I look forward to seeing our Business Plan come to fruition throughout 2025 and our work together enacting the Department's vision of every student, every classroom, every day.

Paige Goodsell
Principal



Overview of the School



In 2024 Beeliar PS continued to grow and had 494 enrolled students according to our Semester 2 census in October. This number is variable throughout the year. We do see some transiency with regular enrolments across K-6, and students moving out of Beeliar and to other schools. In addition to this, there were approximately 40 students attending the Fremantle Language Development Centre satellite classes, which are located on our site.

Beeliar PS is well resourced and has modern facilities for students to learn; however, as the school reaches its 25th year the grounds and classroom furniture will need upgrading over the coming years. This work commenced in 2024.

The following improvements were actioned across the school grounds.

- New student desks in Block 3 classrooms
- Hot water system installed in the Science Room
- New signage across the school
- New fencing around our ECE area
- Demountable classroom installed in Possum Glade

The school's BYOD program is highly successful with over 80% of students from Years 4- 6 bringing their own device. This is managed through the JAMF system to ensure security and access only to identified learning apps when at school.

In 2024 the RAP plan was finalised and adopted, which was a milestone for the school and an acknowledgement of the hard work of the RAP Committee. BPS is grateful to have such an invested group of Aboriginal and non-aboriginal peoples working together towards this vision.

BPS offers specialist learning through Science, Music, Visual Arts, Physical Education and Noongar language.

Students from Years 3-6 engage in Noongar language with the AIEO/Language teacher, who supports the school's reconciliation vision.

The school continues to adopt an Explicit Direct Instructional approach across the school with a range of whole school instructional practices, which support high levels of achievement and progress for our students. The NAPLAN results exemplify the student success and the success of the teaching and learning programs and can be found in the following pages.

Board Chair's Report

As we reflect on 2024, it has been a year of progress, celebration, and forward-thinking for Beeliar Primary School. The School Board has been deeply engaged in the ongoing implementation of our Business Plan, ensuring that our strategic priorities align with the needs of our students, staff, and the broader school community. Through collaboration and careful planning, we have focused on enhancing educational outcomes, strengthening community partnerships, and fostering a culture of continuous improvement.

A key highlight of the year was our 25-year celebration, a milestone that not only allowed us to honour our school's rich history but also reinforced our commitment to shaping an even brighter future for the next generation of Beeliar students. This anniversary provided an opportunity to reflect on our achievements and reaffirm our dedication to innovation and excellence in education.

As we look ahead, we carry forward the spirit of growth and unity that has defined this year. Our journey would not be possible without the dedication of our Board members, who have worked hard to support the school's vision and direction. I would particularly like to extend my sincere gratitude to our outgoing Board members; Tim Mangano, Rachel Parker and Nathan Hughes for their invaluable contributions. Their time, expertise, and passion have helped shape the school's strategic path, and their efforts are hugely appreciated. We also welcomed the following new members throughout 2024 and into the new year; Maddy Luck, Jodie Lundy, Meghan Mitchell, and Hannah Parker as the P&C representative.

As we continue our work, I am confident that Beeliar Primary School will build on its strong foundations to embrace the opportunities of the future. Thank you to our incredible teachers, support staff, students, and families for your ongoing support.

We look forward to another successful year ahead.

Max Clarke
Beeliar PS School Board Chairperson

P&C President's Report

2024 was a fantastic year for the Beeliar Primary School P&C, with strong community engagement, successful fundraising efforts, and meaningful contributions to the school. Thanks to our dedicated volunteers and the support of our school community, we were able to raise significant funds and provide valuable resources to enhance the learning experience for our students.

Fundraising Events

Throughout the year, we organised several fundraising activities that not only helped financially, but also brought our school community together. Key events included:

- Outdoor Movie Night
- Beeliar Primary School 25-Year Anniversary Mug Sales
- Student Free Dress Days
- Mother's Day Stall and Father's Day Stall
- Crazy Sock Day & Sockables Fundraiser
- Easter Raffle
- Rainbow Disco

Community Events

In addition to fundraising, the P&C helped strengthen community connections by coordinating and supporting key events, including: Beeliar Primary School Meet and Greet – Welcoming new and returning families to the school year.

Beeliar Primary School 25-Year Anniversary Community Morning Tea – A special event celebrating this milestone with past and present students, staff and families.

Year 6 Graduation Committee Fundraisers

To support the Year 6 graduation celebrations, the committee successfully ran:

Student Free Dress Days

Sports Carnival Bake Sale and Raffle

External Community Support

We were grateful for the support received from local businesses and initiatives, including:

- Grill'd Local Matters Programme
- Tam's Bakes Cakes Pay It Forward Programme
- Gilberts Fresh SOS Programme

P&C President's Report continued

Uniform Shop

The P&C-managed Uniform Shop continued to be an essential service for our school, ensuring students had access to affordable, high-quality uniforms with ease of purchasing, by having the store on school grounds. At the end of 2024, we farewelled our long-term coordinator, Tabitha Riches, who made a lasting difference in the operation of our uniform shop. The shop remained an important fundraiser, with proceeds reinvested into school initiatives.

P&C Contributions & School Support

With the total revenue of 2024 fundraising amounting to **\$10,528**, the P&C contributed **\$12,743.00** towards important resources and equipment for the school. Some of the key items purchased included:

- Beeliar Primary School teardrop signs for school events and visibility
- Playground equipment for Possum Glade Early Childhood Education area
- BPS lectern for assemblies and special events
- Easels for every classroom (K-6) to support student learning
- New signage to improve communication and wayfinding around the school

These contributions directly enhanced the school environment and supported both students and staff in their daily activities.

Thank You & Looking Ahead

A huge thank you to all the parents, carers, and volunteers who contributed their time and effort throughout the year. The success of the P&C was only possible, because of the incredible dedication of our school community.

As we move into 2025, we encourage more families to get involved with the P&C. Whether you can help at an event, volunteer in the uniform shop, or simply attend meetings, your support is invaluable in helping us continue to make a positive impact at Beeliar Primary School.

We look forward to another great year ahead in 2025.

Kaitlyn Hughes
President,
Beeliar Primary School P&C



Fremantle Language Development Centre Report

Fremantle Language Development Centre (LDC) is an Independent Public School that provides high quality specialist education for Kindergarten to Year 3 students who have been identified as having a Developmental Language Disorder (DLD) or have language difficulties aligning with the criteria for DLD.

Fremantle LDC consists of a school and a state-wide Outreach service and provide targeted, intensive language and academic intervention in a supportive environment that focuses on the social, emotional and academic growth of students.

The school is located across three sites where facilities are shared with local primary schools, enabling children from the LDC to benefit from interaction and inclusion with mainstream students. The main administration and site is located at Caralee Community School and there are LDC classes at Bull Creek Primary School and Beeliar Primary School. In 2024, there were three classes located at Beeliar – Year PP/ 1, Year 1/2 and Year 2/4 with a total number of 40 students and 10 staff.

Students participate alongside their mainstream peers in school events, assemblies, playtime, excursions, and incursions. This integrated model fosters strong collaboration among staff, students, and the wider school community. Our goal is to equip students with the skills and knowledge needed for a smooth transition into mainstream education.

2024 • Fremantle Language Development Centre - Beeliar Satellite **Staff**



Megan
Etelaaho



Verna
Hadwiger



Ellen
Laing



Sondra
Lane



Hayley
Lord



Nichola
Middlemiss



Christina
Plaistowe



Caron
Reid



Staffing Summary 2024

The staff at Beeliar Primary School are committed to high quality teaching and learning practices across every classroom. The school adopts a distributed leadership model with curriculum and team (year level) leaders supporting staff and the implementation of high-quality teaching and learning practices across the school. Beelair PS also has learning coaches who collaborate with teaching staff through a targeted coaching model, focusing on continued improvement.

Teaching staff work in collaborative teams within their learning year levels to plan, teach and assess using the WA Curriculum. Through collaborative teams they implement the schools' connected practices and alongside the coaches, work to reduce the variation between classrooms. All teaching staff meet the professional requirements to teach in Western Australian public schools.

Our non-teaching staff such as the Allied Professionals, work across classrooms in the Kindy and Pre-primary to increase the student to adult ratio, which in turn ensures we can deliver a high-quality program to every student. Special Needs Allied Professionals work alongside classroom teachers to support students with a disability or an identified additional need to access the curriculum and learning program.

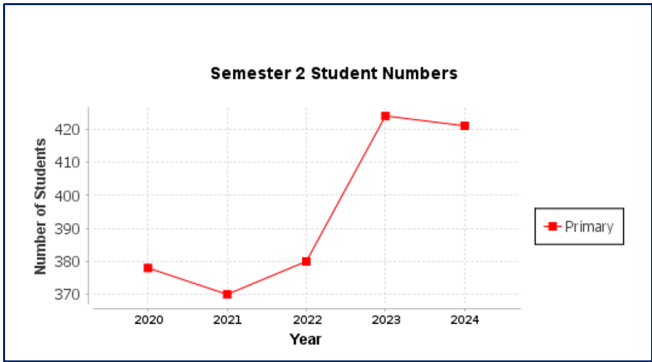
Other non-teaching staff include our cleaners, gardener and administration team. These staff are essential to the functionality and operations of the school and form a key part of our overall success.

All staff participate in professional learning and performance management processes to ensure there is a continued focus on improving their skills, knowledge and practice.

Beeliar PS is lucky to have exemplary staff working in the school, ensuring students access a high-quality learning experience every day.

	No	FTE	AB'L
Administration Staff			
Principals	1	1.0	0
Associate / Deputy / Vice Principals	2	2.0	0
Total Administration Staff	3	3.0	0
Teaching Staff			
Level 3 Teachers	1	1.0	0
Other Teaching Staff	27	23.2	0
Total Teaching Staff	28	24.2	0
Allied Professionals			
Clerical / Administrative	4	3.0	0
Gardening / Maintenance	1	0.8	0
Instructional	1	0.4	1
Other Allied Professionals	20	14.7	1
Total Allied Professionals	26	18.9	2
Total	57	46.1	2

Student Information 2024



Beeliar Primary School continues to be a school of choice in the area and although this graph shows a slight dip in numbers, they are continuing to increase over time.

The graph below indicates the number of full-time students attending the school at the end of 2024. 76 students also attended part-time (0.5 days) in Kindergarten across the week.

Student Numbers (as at 2024 Semester 2)

Primary	Kin	PPR	Y01	Y02	Y03	Y04	Y05	Y06	Total
Full Time	(38)	71	83	57	54	52	52	52	459
Part Time	76								

Note: The Kin Full Time student figure represents the Full Time Equivalent of the Part Time students

	Kin	PPR	Pri	Sec	Total
Male	39	33	186		258
Female	37	38	164		239
Total	76	71	350		497

	Kin	PPR	Pri	Sec	Total
Aboriginal	3	7	30		40
Non-Aboriginal	73	64	320		457
Total	76	71	350		497

Attendance

Student Attendance 2024 Business Plan Target

The regular attendance rate of all students will be similar to or better than WA Public Schools.

Not Achieved

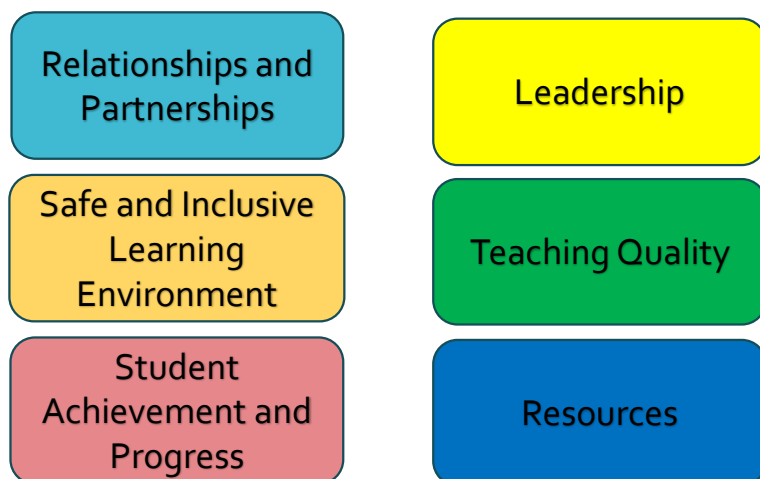
Attendance Overall Primary

	Non-Aboriginal			Aboriginal			Total		
	School	Like Schools	WA Public Schools	School	Like Schools	WA Public Schools	School	Like Schools	WA Public Schools
2022	89.7%	88%	88.3%	81%	79.9%	69.5%	89%	87.5%	86.6%
2023	90.6%	90.3%	90.3%	85%	80.4%	74.3%	90.2%	89.7%	88.9%
2024	91.4%	91.5%	91%	77.4%	81.8%	74.3%	90.2%	91%	89.4%

Business Plan Review 2024

In 2024 the school continued towards the strategic intent of the 2022 – 2024 Business Plan. This year was the final year of the Business Plan, and a new plan was developed to set the direction for the years to come.

The 2022- 2024 Business Plan identified six focus areas.



The progress made in each focus area is described in the pages that follow. The school's focus has been on developing and building teacher capacity so that every classroom has effective lesson delivery, with the aim to embed the pedagogical practices associated with Explicit Direct Instruction and Visible Learning in our teaching practice.

Lesson delivery is consistent and based on evidence and research. Fine-grained scope and sequences in Literacy and Numeracy have been developed to support consistency of practice across classes, and a seamless delivery of the WA Curriculum.

Aspiration... at Beeliar Primary School we aim to be a school of excellence, to be above like schools in Literacy and Numeracy - NAPLAN



Business Plan Review

2024

The school values its connections and partnerships with parents, carers and the community.

There is a strong connection between the school staff, P&C and School Board which forms the key formal connections between the school and parent body. These committees meet 1-2 times per term and enable effective collaboration between the principal, staff and parent group.

The School Board is committed and supports the strategic direction of the school. They inform, endorse and approve a range of different matters at each meeting. In 2024, the Principal and Board Chair completed the Department's School Board Professional Learning to ensure they were both informed of their roles and responsibilities.

The school appreciates all the work of our P&C, who plan and hold community events and fundraisers for the school that are always enjoyed by all. All money raised goes back into the school to support purchasing of agreed wishlist items. As noted in the president's report; they held a disco, mother's day and father's day stalls, termly dress up days and other fundraisers. The P&C also manage the uniform shop, which enables our uniform sales to stay on-site and at a low price for families.

Parents are invited into classes at the start of each day when the classrooms are open, to see their child's work and learning environment. In Term 1 parent teacher interviews were held to enable every parent the opportunity to meet with their child's teacher, to build connections and check on their progress. In Term 3 the school opened in the evening for a formal learning journey, where students and their families were invited into the school to celebrate their achievements. The evening was truly enjoyed by all. There were many other opportunities for parents to connect with their child's teachers throughout the year such as assemblies, excursions and special events such as ANZAC day to name a few. BPS values its connection with the community and parent group to foster a love of learning for our students.

The 'Reading Angels' program continued in 2024 and has been strongly supported by a dedicated group of volunteers from the local community. This program enables our students to practise oral reading as well as developing strong word attack skills.

In 2024 BPS updated the school's website to ensure all communication was up to date and easy to access for our families. The Beeliar Bulletin (our school newsletter) updates families regularly on important events, with inclusions from the principal and executive team and to provide news items from classrooms and our student leaders. BPS also provides regular updates through our other platforms Connect, Compass and Facebook.

Business Plan Review

2024

Focus Area 1: Relationships and Partnerships Business Plan Target:
The National School Opinion Survey results are positive for community, staff and students with all items ranking at 4 or above.
No 2024 data available.

The school’s National Schools Opinion Survey was conducted in 2023 however, in 2024, the NSOS survey was not available to schools due to its decommissioning. 2025 will bring a new survey to the Department and school, to seek feedback from our families, staff and students.

Whilst no formal data is available to review, positive feedback from parents, staff and students has been noted throughout the year.

This table shows a summary of the 2023 NSOS data.

In 2025 the school will use the Department’s new school opinion survey as a check point for feedback from our stakeholders.

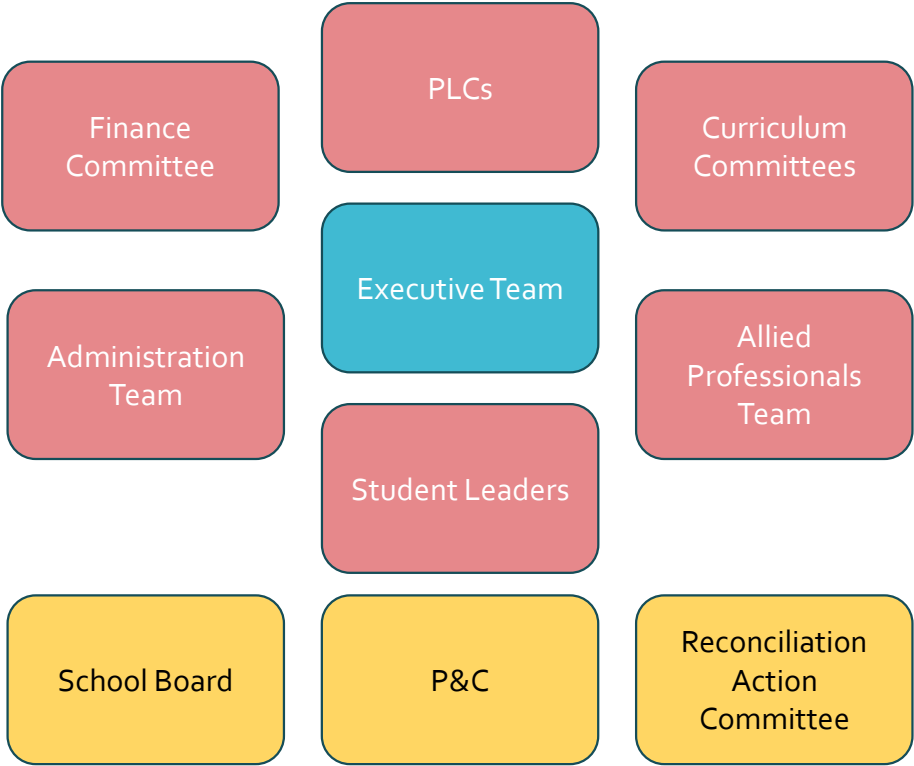
Staff	Students	Parents
4.7 Teachers at this school expect students to do their best 4.5 Teachers at this school provide students with useful feedback 4.5 Teachers at this school treat students fairly 4.0 The school is well maintained 4.3 Students feel safe at this school 4.3 Students at this school can talk to their teachers about their concerns 4.3 Parents of this school can talk to teachers about their concerns 4.0 Student behaviour is well managed 4.4 Students like being at this school 4.4 Teachers at this school motivate students to learn 4.2 Students learning needs are met at this school 4.2 The school works with parents to support students learning 4.1 I am satisfied with the overall education achieved 4.1 I would recommend this school 4.5 Teachers at this school are good teachers 4.6 Teachers at this school care for students	4.4 My teachers expect me to do my best 4.1 My teachers are good teachers 4.1 My teachers care about me	4.2 Teachers at this school expect students to do their best 4.0 Teachers at this school treat students fairly 4.1 The school is well maintained 4.2 Students feel safe at this school 4.2 I can talk to my child's teacher about my concerns 4.2 My child likes being at this school 4.0 Teachers at this school motivate students to learn 4.0 Teachers at this school motivate my child to learn 4.0 I am satisfied with the overall education achieved 4.4 My child's teacher are good teachers 4.2 Teachers at this school care for my child
3.9 The school looks for ways to improve 3.2 The school takes staff opinions seriously 3.4 I receive useful feedback about my work at this school 3.1 Staff are well supported 3.6 The school has a strong relationship with the community 3.1 The school is well led	3.8 My teacher provides me with useful feedback 3.7 Teachers at my school treat students fairly 3.9 The school is well maintained3.8 I feel safe at school 3.6 I can talk to my teachers about my concerns 3.3 Student behaviour is well managed 3.5 I like being at school 3.8 The school looks for ways to improve 3.5 The school takes student's opinions seriously 3.9 My teacher motivates me to learn 3.9 My school gives me opportunities to do interesting things	3.9 Teachers at this school provide my child with useful feedback 3.8 Student behaviour is well managed 3.6 The school looks for ways to improve 3.3 The school takes my opinions seriously 3.9 My child's learning needs are being met at this school 3.9 The school works with me to support my child's learning 3.7 The school has a strong relationship with the community 3.2 The school is well led 3.8 I would recommend this school to others

Business Plan Review 2024



Focus Area 2: Leadership

Beeliar PS fosters leadership through a distributed leadership model. Our staff believe that we all have leadership responsibilities and influence. Through this model, different portfolios are aligned and managed by a range of staff. Through these portfolios, operational and strategic decisions and management is a shared responsibility between teaching and non-teaching staff.



PLCs are led by team leaders, supported by the Executive Team.
The Professional Learning Committee (PLC) model has two key focus areas;

1. Improving student outcomes
2. Improving teaching and learning

Curriculum committees are led by curriculum leaders who manage operations and resources within their learning area, whole school connected programs and improvement, and monitoring of student data.

Beeliar PS's Level 3 and Senior Teachers take on roles and responsibilities above their classroom practice, to support the strategies direction and improvement across the school. This includes role such as coaching and supporting our Noongar Club.

All staff are supported to aspire for ongoing improvement and leadership aspirations are fostered.

Business Plan Review 2024

Focus Area 3: Safe and Inclusive Learning Environment

Beeliar PS provides a safe and inclusive learning environment for all through the key drivers of reconciliation, Stand Tall, Sustainability, the Student Services Team, and enhancing the grounds.

Reconciliation

BPS recognises and values the contributions of Aboriginal Australians and non- Aboriginal Australians to the education of all our students. In 2024 our RAP plan was finalised and adopted, which was a milestone for the school and acknowledgement of the hard work of the RAP Committee. BPS is grateful to have such an invested group of Aboriginal and non-aboriginal peoples who work together towards this vision. Staff and students acknowledge our traditional custodians through formal and informal ways and seek to integrate this perspective into daily practices. Each year Beeliar celebrates important events with our community, such as NAIDOC, Sorry Day and Reconciliation week, but we know that reconciliation is truly achieved through action every day.

Stand Tall

The Stand Tall program, which encompasses the four pillars of Citizenship, Empowerment, Excellence and Spirit drives the positive behaviour expectations at Beeliar PS. Each term we focus on one pillar, and this forms a key part of our learning in the classroom and at assembly. Students who show our Stand Tall pillars are recognised through our Thrive with 5 and formally through celebrations and awards.

Student Services Team (SST)

The STT supports all students at our school to achieve their potential. The team comprises of both deputy principals, the chaplain and school psychologist. They provide targeted support for our disability students and those with additional needs. We adopt the multi-tiered system of support (MTSS) through the 3-tiers of intervention.

Sustainability

Sustainability continued to be a key focus area at Beeliar Primary School through many programs. In 2024 the school received installation of solar panels on the roof of Block 4, which was a welcome addition to support and reduce our carbon footprint. See the pages that follow for more information around this program.

Ground Enhancement

As our school reaches its 25th year we look to enhance the grounds and furnishings of the school. This will be an ongoing project into 2025.

Business Plan Review 2024

Focus Areas 4: Teaching Quality

At Beeliar PS, staff work to deliver high quality education across every classroom, every day. Through the school's Explicit Direct Instruction program, there is a focus on high levels of student engagement and participation, and a focus on explicit instruction.

Whole school connected practices support staff to implement research based, high quality pedagogical practices into every classroom. To enable these practices to be implemented with consistency and fidelity, all staff engage in key professional learning, coaching conversations, modelling and feedback, performance management and the PLC model.

The following whole school connected practices are embedded at BPS;

- Pre-Lit and Initial Lit (K-Year 2)
- Spelling Mastery (Years 3-6)
- PRIME Mathematics (K-Year 6)
- Critical Reading (Years 3-6)
- Talk for Writing (K-Year 6)

The effect of these practices is evident in our student outcome data. The school continuously works to improve teaching practices and through our business plan targets, we review their impact and adjust our practice ensuring a focus on high quality teaching is achieved.

All staff new to BPS participate in a thorough induction process to ensure they are skilled in delivery of these programs. Our coaches support all staff to deliver these programs with fidelity.



Business Plan Review 2024

Focus Areas 5: Student Achievement and Progress

Students at Beeliar Primary School continue to achieve excellent results in system wide testing and school-based assessments. Staff reflect on student progress and achievement through their PLC meetings and staff meetings. Collaboratively staff interrogate data sets to identify areas of strengths, areas for growth and planning actions to address any areas identified. You can see the results of our student achievement and progress in the following pages.

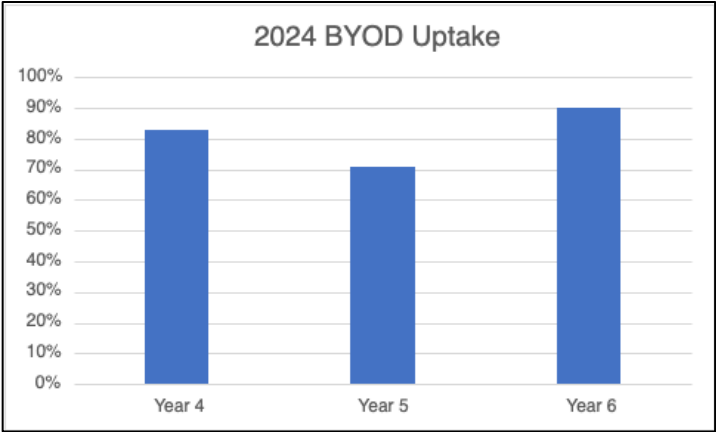
Focus Area 6: Use of Resources

The Principal, MCS and Finance Committee work collaboratively to align the one-line budget to focus on areas identified through the Business Plan.

The majority of the school’s funding is spent staffing the school with a small allocation available as cash. Each curriculum area and classroom has a cost centre manager who manages their budget ensuring monies are spent with a focus on teaching and learning.

In 2024 the school began its upgrade plans of beautifying the school grounds by refreshing signage around the school. We began to replace student furniture across the school, which will be a continued focus moving into 2025. We are also in the process of developing a replacement schedule for our ICT across the school and to refresh the classrooms through painting and refreshing the bathroom facilities. This work will be done over the next 3-5 years.

The school has a BYOD (bring your own device program) that is highly successful in Years 4-6. The uptake of this program is exemplified below.



Academic Achievement 2024

On Entry 2024

Students in Pre-primary complete the On Entry Assessment in Term 1 with their teacher. It is an assessment for learning to identify what skills and understandings our PP students begin their formal education with. In 2024 BPS performed below like schools in all areas tested. Staff in the Early Years review this data to consider implications on the teaching and learning program, as well as for individual students.

2024	Reading	Writing	Numeracy
WA Public Schools	450	201	429
Like Schools	450	210	435
Beeliar PS	439	141	422

NAPLAN Summary

All Year 3 and 5 students participate in the NAPLAN assessment each year. The results are described on the pages that follow. BPS has three targets relating to the NAPLAN assessment and a summary is provided below.

Target 1. Percentage of students in bottom 20% in Numeracy and Literacy to be similar to or less than Like Schools

Numeracy		Reading		Writing		Spelling		Grammar & Punctuation	
Yr 3	Yr 5	Yr 3	Yr 5	Yr 3	Yr 5	Yr 3	Yr 5	Yr 3	Yr 5

Target 2. Percentage of students in top 20% in Numeracy and Literacy to be similar to or better than Like Schools

Numeracy		Reading		Writing		Spelling		Grammar & Punctuation	
Yr 3	Yr 5	Yr 3	Yr 5	Yr 3	Yr 5	Yr 3	Yr 5	Yr 3	Yr 5

Target 3. Achieve green boxes in year 3 and 5 NAPLAN (achieving one standard deviation above the Australian norm)

Numeracy		Reading		Writing		Spelling		Grammar & Punctuation	
Yr 3	Yr 5	Yr 3	Yr 5	Yr 3	Yr 5	Yr 3	Yr 5	Yr 3	Yr 5

Academic Achievement 2024

NAPLAN 2024 – Targets – Year 3

Percentage of students in **bottom** 20% in Numeracy and Literacy to be similar to or less than Like Schools

Year 3 Achieved ALL areas

Percentage of students in **top** 20% in Numeracy and Literacy to be similar to or better than Like Schools

Year 3 Achieved 4 out of 5 areas

Achieved

Achieved

Achieved

Achieved

Not Achieved

Achieved

Achieved

Achieved

Achieved

Achieved

WA Public Schools	Year 3 Spelling					
	School			Like Schools		
	2022	2023	2024	2022	2023	2024
Top 20%	24%	32%	27%	17%	16%	19%
Middle 60%	63%	64%	62%	64%	67%	63%
Bottom 20%	12%	4%	12%	19%	17%	18%

WA Public Schools	Year 3 Numeracy					
	School			Like Schools		
	2022	2023	2024	2022	2023	2024
Top 20%	29%	31%	34%	15%	19%	18%
Middle 60%	59%	61%	51%	65%	63%	63%
Bottom 20%	12%	8%	15%	20%	19%	19%

WA Public Schools	Year 3 Writing					
	School			Like Schools		
	2022	2023	2024	2022	2023	2024
Top 20%	38%	41%	17%	21%	17%	22%
Middle 60%	58%	53%	69%	64%	67%	61%
Bottom 20%	4%	6%	13%	15%	17%	16%

WA Public Schools	Year 3 Reading					
	School			Like Schools		
	2022	2023	2024	2022	2023	2024
Top 20%	27%	31%	40%	15%	16%	18%
Middle 60%	67%	63%	51%	66%	68%	64%
Bottom 20%	6%	6%	9%	19%	17%	18%

WA Public Schools	Year 3 Grammar & Punctuation					
	School			Like Schools		
	2022	2023	2024	2022	2023	2024
Top 20%	29%	36%	31%	15%	18%	29%
Middle 60%	61%	58%	50%	67%	64%	47%
Bottom 20%	10%	6%	19%	18%	18%	24%

Academic Achievement 2024

NAPLAN 2024 – Targets – Year 5

Percentage of students in **bottom** 20% in Numeracy and Literacy to be similar to or less than Like Schools

Year 5 Achieved ALL areas

Percentage of students in **top** 20% in Numeracy and Literacy to be similar to or better than Like Schools

Year 5 – Not achieved

Achieved

Not Achieved

Achieved

Not Achieved

Achieved

Not Achieved

Achieved

Not Achieved

Achieved

Not Achieved

WA Public Schools	Year 5 Numeracy					
	School			Like Schools		
	2022	2023	2024	2022	2023	2024
Top 20%	25%	19%	24%	11%	16%	19%
Middle 60%	57%	58%	54%	67%	64%	65%
Bottom 20%	18%	23%	22%	22%	20%	16%

WA Public Schools	Year 5 Reading					
	School			Like Schools		
	2022	2023	2024	2022	2023	2024
Top 20%	19%	23%	20%	14%	16%	18%
Middle 60%	67%	57%	60%	63%	66%	66%
Bottom 20%	14%	21%	20%	23%	18%	16%

WA Public Schools	Year 5 Spelling					
	School			Like Schools		
	2022	2023	2024	2022	2023	2024
Top 20%	22%	29%	24%	13%	17%	17%
Middle 60%	55%	52%	54%	63%	62%	66%
Bottom 20%	23%	19%	22%	24%	21%	17%

WA Public Schools	Year 5 Writing					
	School			Like Schools		
	2022	2023	2024	2022	2023	2024
Top 20%	11%	23%	24%	14%	20%	21%
Middle 60%	76%	65%	59%	67%	65%	68%
Bottom 20%	13%	12%	16%	19%	15%	11%

WA Public Schools	Year 5 Grammar & Punctuation					
	School			Like Schools		
	2022	2023	2024	2022	2023	2024
Top 20%	17%	35%	18%	12%	18%	17%
Middle 60%	58%	48%	60%	64%	62%	68%
Bottom 20%	25%	17%	22%	24%	20%	15%

NAPLAN 2024 – Proficiency Bands – Year 3 & Year 5

Proficiency Level Summary

Proficiency Level	NAPLAN Score Range	Numeracy			
		Year 3			
		2023		2024	
		Sch	Like Sch	Sch	Like Sch
Exceeding	493 and	14%	8%	15%	6%
Strong	378 - 492	63%	54%	57%	55%
Developing	311 - 377	22%	25%	23%	29%
NAS	310 and	2%	12%	6%	10%

Proficiency Level Summary

Proficiency Level	NAPLAN Score Range	Numeracy			
		Year 5			
		2023		2024	
		Sch	Like Sch	Sch	Like Sch
Exceeding	577 and	12%	7%	18%	11%
Strong	451 - 576	54%	54%	44%	55%
Developing	386 - 450	23%	28%	24%	26%
NAS	385 and	12%	12%	14%	8%

Proficiency Level Summary

Proficiency Level	NAPLAN Score Range	Reading			
		Year 3			
		2023		2024	
		Sch	Like Sch	Sch	Like Sch
Exceeding	481 and	27%	12%	34%	15%
Strong	368 - 480	55%	52%	40%	51%
Developing	282 - 367	14%	25%	17%	19%
NAS	281 and	4%	11%	9%	15%

Proficiency Level Summary

Proficiency Level	NAPLAN Score Range	Reading			
		Year 5			
		2023		2024	
		Sch	Like Sch	Sch	Like Sch
Exceeding	555 and	23%	14%	18%	16%
Strong	448 - 554	45%	56%	50%	54%
Developing	377 - 447	26%	21%	14%	20%
NAS	376 and	6%	9%	18%	10%

Proficiency Level Summary

Proficiency Level	NAPLAN Score Range	Writing			
		Year 3			
		2023		2024	
		Sch	Like Sch	Sch	Like Sch
Exceeding	503 and	12%	7%	10%	8%
Strong	370 - 502	73%	71%	69%	72%
Developing	296 - 369	14%	15%	13%	14%
NAS	295 and	0%	7%	8%	7%

Proficiency Level Summary

Proficiency Level	NAPLAN Score Range	Writing			
		Year 5			
		2023		2024	
		Sch	Like Sch	Sch	Like Sch
Exceeding	570 and	12%	7%	16%	8%
Strong	455 - 569	58%	57%	51%	61%
Developing	385 - 454	23%	24%	22%	25%
NAS	384 and	8%	12%	10%	7%

Proficiency Level Summary

Proficiency Level	NAPLAN Score Range	Spelling			
		Year 3			
		2023		2024	
		Sch	Like Sch	Sch	Like Sch
Exceeding	489 and	24%	11%	17%	14%
Strong	380 - 488	54%	46%	52%	46%
Developing	294 - 379	20%	32%	23%	29%
NAS	293 and	2%	10%	8%	11%

Proficiency Level Summary

Proficiency Level	NAPLAN Score Range	Spelling			
		Year 5			
		2023		2024	
		Sch	Like Sch	Sch	Like Sch
Exceeding	553 and	29%	17%	24%	18%
Strong	451 - 552	44%	51%	50%	53%
Developing	378 - 450	21%	22%	16%	21%
NAS	377 and	6%	11%	10%	8%

Proficiency Level Summary

Proficiency Level	NAPLAN Score Range	Grammar & Punctuation			
		Year 3			
		2023		2024	
		Sch	Like Sch	Sch	Like Sch
Exceeding	523 and	10%	5%	12%	9%
Strong	404 - 522	62%	47%	54%	44%
Developing	312 - 403	26%	31%	21%	28%
NAS	311 and	2%	17%	13%	18%

Proficiency Level Summary

Proficiency Level	NAPLAN Score Range	Grammar & Punctuation			
		Year 5			
		2023		2024	
		Sch	Like Sch	Sch	Like Sch
Exceeding	582 and	19%	10%	12%	10%
Strong	470 - 581	44%	45%	48%	50%
Developing	397 - 469	27%	31%	24%	31%
NAS	396 and	10%	13%	16%	9%

Academic Achievement 2024

Business Plan Target – NAPLAN 2024

Achieve green boxes in year 3 and 5 NAPLAN (achieving one standard deviation above the Australian norm)

Achieved Year 3 (4 out of 5 areas)

NAPLAN Comparative Performance for Year 3

Year 3	Performance		Students	
	2023	2024	2023	2024
Numeracy	1.4	1.3	51	53
Reading	1.6	1.3	51	53
Writing	1.6	0.4	49	52
Spelling	1.6	1.1	50	52
Grammar & Punctuation	1.8	1.1	50	52

NAPLAN Comparative Performance for Year 3

Year 3	Performance			Students		
	2019	2021	2022	2019	2021	2022
Numeracy	-0.5	0.7	0.0	50	50	49
Reading	-0.4	1.3	0.0	50	50	48
Writing	1.5	1.2	0.0	50	50	48
Spelling	0.9	1.3	0.0	50	50	49
Grammar & Punctuation	0.7	1.7	0.0	50	50	49

Not Achieved Year 5

NAPLAN Comparative Performance for Year 5

Year 5	Performance		Students	
	2023	2024	2023	2024
Numeracy	0.4	0.2	52	50
Reading	0.5	-0.1	53	50
Writing	0.6	0.5	52	49
Spelling	0.6	0.1	52	50
Grammar & Punctuation	0.7	-0.0	52	50

NAPLAN Comparative Performance for Year 5

Year 5	Performance			Students		
	2019	2021	2022	2019	2021	2022
Numeracy	-0.1	-0.2	0.0	63	44	65
Reading	-0.4	0.6	0.0	63	45	64
Writing	0.3	0.0	0.0	63	46	63
Spelling	0.4	-0.6	0.0	63	44	65
Grammar & Punctuation	-0.6	-0.6	0.0	63	44	65

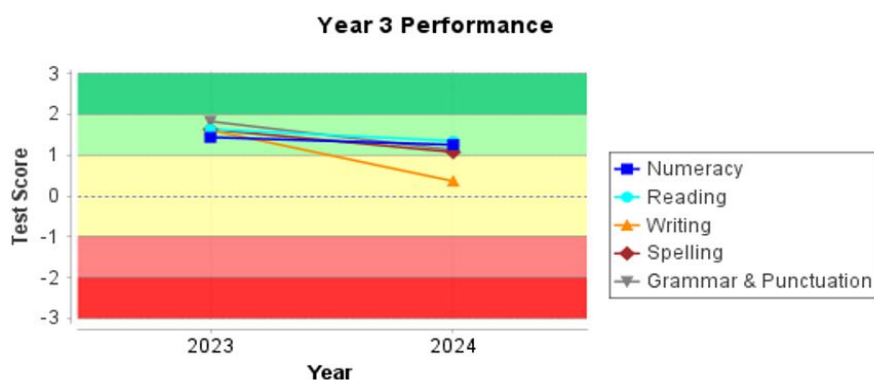
Academic Achievement 2024

NAPLAN 2024

In 2023 the Department of Education released a new methodology for ranking the NAPLAN assessment. As a result, longitudinal data comparing 2023 and 2024 to previous data sets is not available.

*Aspiration... at Beeliar Primary School we aim to be a school of excellence, to be **above like schools** in Literacy and Numeracy – NAPLAN (i.e. above o.o)*

Year 3 – Achieved all Areas



Year 5 – Achieved Numeracy, Writing, Spelling

Year 5 - Not Achieved Reading, Grammer and Punctuation



Beeliar Highlights 25 Year Celebration

On Friday 18 October 2024, Beeliar PS marked 25 years since BPS first opened. This milestone provided a wonderful opportunity to reflect on our journey, celebrate our achievements, and look forward to what's next.

Since opening, the school has provided a nurturing and engaging environment for thousands of students. Over the years the school has grown into a vibrant school community committed to fostering curiosity, creativity, and a love of learning.

To commemorate the event, Uncle Barry Winmar joined the community for a Welcome to Country and Smoking Ceremony, with the intent to cleanse the school of any bad spirits and bring good luck to our school for the future. Uncle Barry spoke to the community about the Wadjuk country of Beeliar.

Following the smoking ceremony a community assembly was held with speakers including our principal Miss Goodsell, the foundation principal Mr Glendenning and other special guests.

The assembly was well attended and enjoyed by all. Following the assembly the P&C held a community afternoon tea, and the library was open for all families, past and present, to visit and see items from the time capsule. All current students were invited to add something to the time capsule to be opened during another milestone in the future.

Special thanks to Mrs Hancock who is the last remaining foundation staff member who worked with our students to design a commemorative mug and Wanjoo signage for the front of the school. The images that were used in the mug, created by our students, were also used in our 2025 and Beyond Business Plan.





Beeliar Highlights

The Arts – Visual Art

Students from Pre-primary to Year 6 accessed specialist Visual Arts in 2024. The school is very lucky to have a specialist classroom for this learning area with access to an urn for clay work.

Year 2s and 3s investigated the dinosaur art of Jean Micheal Basquiat.

The Year 4 students finished Term 1 creating sombre portraits of Anzac soldiers which went on display at the Cockburn Memorial Hall and at the school's Anzac ceremony at the beginning of Term 2.

In Term 3 and 4, the Year 4 students created amazing art based on Hundertwasser including fabulous clay plaques.

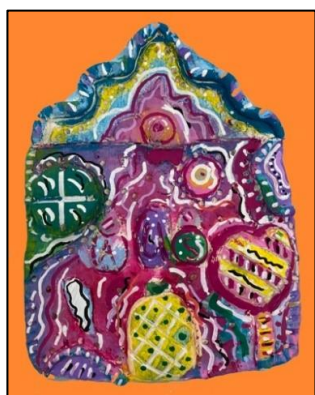
Year 5 students investigated the artworks of Picasso and again produced amazing Cubist portraits.

The early childhood artists from Pre-primary explored a variety of collage techniques to create Eric Carle Very Hungry caterpillars, and they had great fun making clay cats.

Highlights for 2024

During Term 3, students were invited to make drawings of local indigenous plants for the design of a mural which will beautify the front entry to the office. The following students; Elias Ward, Paige Hollingsworth, Taylor Hartfield and Maria Kovalyshen had their drawings selected for the final design. The mural will be installed in 2025.

During Term 3, students also began working on floral drawings to be included in a design for a **25 Year celebration Mug** – the following students had their drawings selected; Elias Ward, Hani Kim, Amarsha Fernando, Maria Kovalyshen, and Darcy Wright.



y in Term 3 was attended exceptionally impressive.





Beeliar Highlights

The Arts - Music

This year the Specialist Music Program included all classes PP-Yr 6. BPS had not always offered a Specialist Music Program, and the focus this year was to deliver a highly structured, intense program to get the students to a standard to enable achievement of the Western Australian Curriculum outcomes.

Students worked through the curriculum outcomes, developing their skills in responding to and making music. Through vocal and instrumental activities and opportunities to reflect on the music they listened to students and were able to build a repertoire of skill. Activities were designed to give students multiple experiences with reading music, playing music and interpreting music. The program developed a balanced approach introducing the students to the six elements; Rhythm, Texture, Dynamics, Pitch, Structure (Form) and Tempo. The upper classes had a successfully intensive program in the first few months to get them to year level appropriate activities.

There were many highlights in 2024 including:

Beeliar Primary School Choir

This year's choir consisted of 50 students from years 3-6 who rehearsed for 50 minutes every Friday morning. The first performance of the year was ANZAC Day, and the students performed beautifully. This was followed by the CCEN Festival of Music at Harmony Primary School. A definite highlight was The One Big Voice Festival at RAC Arena in August, where the choir performed alongside hundreds of other students from many schools throughout Western Australia. This was a highlight not only for the students but also for the school community. The successful end of year concert was a performance of the One Big Voice repertoire, with the opportunity for many soloists to share their beautiful singing voices.



The IMSS program

Selected Year 5 and 6 students learnt classical guitar through the IMSS program this year. These students excelled playing their instruments and were able to perform for a wider audience at the end of the year.



Beeliam Highlights Noongar Language

Noongar Language Program

Throughout 2024, the Year 3 to Year 6 koolangka (students) have made significant progress in consolidating foundational Noongar greetings, expanding their conversational skills, asking and responding to key questions in both structured and informal settings.

The students have explored two key topics this year: Ngany (Me) and Kedala wer Kedalak (Day and Night), extending their vocabulary. Digital media was utilised to share and showcase their growing nakolak (knowledge) of the Noongar language, thus fostering a deeper appreciation of the Noongar language and culture.

With the arrival of the demountable in Term 4, Noongar moved from the classroom to its own space. This supported an engaging and interactive environment for our Noongar language studies.

Lower Primary Geography Program

Year 1 and 2 students had the opportunity to further develop their sense of self and their place in the world through a greater focus on Geography. Through the exploration of maps, atlases, graphs, and images classes explored their own community, including different places and communities within their state, their country and around the world. This hands-on approach has fostered both curiosity and understanding of the world in which we live and nurtured a keen sense of environmental responsibility.



Beeliar Highlights Physical Education

The Physical Education program continues to provide both structured lessons and team game activities for Pre-primary to Year 6 students.

There were many sporting highlights in 2024:

In Term 1, Beeliar hosted the B Division Bunuru Carnival, where our students competed in basketball, cricket, tee-ball and volleyball. It was a successful day, with our teams finishing 4th in tee-ball, 4th in volleyball, 2nd in basketball and 1st in cricket. Beeliar finished the day in equal second place with Honeywood, while Hammond Park won the overall shield.

The Cross-Country Grand Finals were held in mid Term 2, with Edina winning the shield for the fourth year in a row. Beeliar finished in 9th position at the Interschool Cross Country Carnival, which was hosted by Honeywood Primary School. Karina Kovalyshen (Year 3) and Grace Cammell (Year 6) both won bronze medals in their races.

The Winter Sports Carnival was held at Hammond Park Secondary College. Beeliar placed fourth in modcrosse, third in soccer, third in football and first in netball (the first Beeliar team to win the netball shield since 2016). Beeliar finished third in the overall shield, with Jandakot and Honeywood equal-first.

The Faction Athletics Carnival was held in Term 3 and won by Edina – their third win in four years. The Kindy Sports Carnival followed a new format, being held over two days in Term 3 and run by the Kindy teachers, Miss Lauritsen and Miss Greaves.

At the Interschool Athletics Carnival, Beeliar came 3rd place, with Honeywood taking the overall honours. Four Beeliar students won runner-up medals in the individual championships: Matilda Ledwidge (Year 3), Archie Shepherdson (Year 4), Rhyen Hamilton (Year 6) and Grace Cammell (Year 6).

Students in Year 4-6 had the option of signing up to play in lunchtime sports competitions. A volleyball tournament was held in Term 1, soccer in Term 2 and basketball in Term 4.



Beeliam Highlights Science

The 2024 school year has been a remarkable one for Science education, as students from across the year groups engaged in a variety of real-world and challenging investigations. Throughout the year, students had the opportunity to immerse themselves in a wide range of experiments. These hands-on activities allowed them to test hypotheses, observe reactions and make discoveries. From making electrical circuits in Year 6 to launching an exciting cooking program with Year 4, students have explored science in dynamic and creative ways. This year has been a testament to the value of practical learning, with students not only discovering scientific concepts but also developing critical thinking and problem-solving skills.

Though the generous donation of resources from Oz Harvest and the support from the volunteer parents we were able to provide fun and engaging opportunities for the students. The experiences have fostered a love of learning and encouraged students to think scientifically, experiment with new ideas, and develop important skills that will serve them well in the future. We are grateful for the ongoing support of our school community and look forward to another year of scientific exploration and discovery in 2025.

Science Week 2024

Term 3 saw the return of *Science Week*, an annual highlight that brings together students from all year groups to showcase their scientific curiosity and creativity. This year, we were again thrilled to see an impressive number of entries from Pre-Primary through to Year 6. We were especially impressed with the creativity and innovation that went into each project, as well as the strong support from parents, who played an instrumental role in helping students bring their ideas to life.



Beeliar Highlights Sustainability



2024 has been another successful year for sustainability at Beeliar Primary School. Our students have demonstrated their commitment to environmental care through a wide range of initiatives, from cleanups and recycling programs to composting and energy conservation. We would like to extend our thanks to the Beeliar Community Association, the City of Cockburn, and all the staff and students for their ongoing support of our sustainability efforts. As we look to the future, we remain committed to fostering a culture of environmental responsibility and ensuring that Beeliar Primary School continues to be a leader in sustainability education.

This year, a range of initiatives engaged our students in sustainability practices:

1. Whole-school Cleanups

As part of our preservation of the environment we conducted whole-school cleanups involving both students and staff, supported by the Beeliar Community Association and the City of Cockburn. Students were given opportunities to gain experience about the impact of littering and the importance of waste management.

2. Environmental Leadership Day

Two outstanding year 5 students, Isabel and Tomasz, represented our school as our ambassadors at the Cockburn Environmental Leadership Day, an event organized by David Scaife MLA. The students engaged with local leaders, learning about environmental issues, and discussing solutions for a sustainable future, sharing their new knowledge back at school, thus furthering Beeliar PS's environmental advocacy and leadership within this field.

3. Waste Wise Warrior Program

Waste Wise Warrior Program provides ongoing leadership opportunities for our Year 4 students who oversee the reduction of food waste through composting, successfully composting 600kg of fruit and vegetable scraps, turning waste into nutrient-rich compost for use in the school garden. The program fosters the education of the composting process and its role in sustainable gardening practices.

Beeliar Highlights Sustainability continued

4. Recycling Initiatives

The Year 3 students took carriage of the waste reduction and recycling program, maintaining our 3-bin recycling system, 10c containers for the Containers for Change program, and a co-mingled bin for hard plastics and glass. The students played an essential role in managing the collection and emptying the paper recycling bins from across the school every fortnight.

5. Energy Conservation

Year 5 students are our Power Rangers. They focus on the reduction of the school's overall electricity consumption. The students record energy saving across the school rewarding classes for turning off lights, interactive whiteboards, and for setting air conditioners to the correct temperature.

6. Environmental Education for Schools Grant

This year we were awarded an Environmental Education for Schools grant from the City of Cockburn. This grant subsidised an incursion by West Oz Wildlife for our Year 2-5 students, providing them with a firsthand learning experiences about native wildlife, providing opportunities for interaction with native animals and learning about the importance of preserving their habitats.

7. Officeworks Recycling Program

Beeliar Primary School also participated in the Officeworks recycling program, an initiative that recycle used pens, textas, highlighters, and whiteboard markers. This year, we successfully recycled over 20kg of writing implements, diverting waste from landfill and contributing to the circular economy.



Beeliar Celebrations

NAIDOC 2024

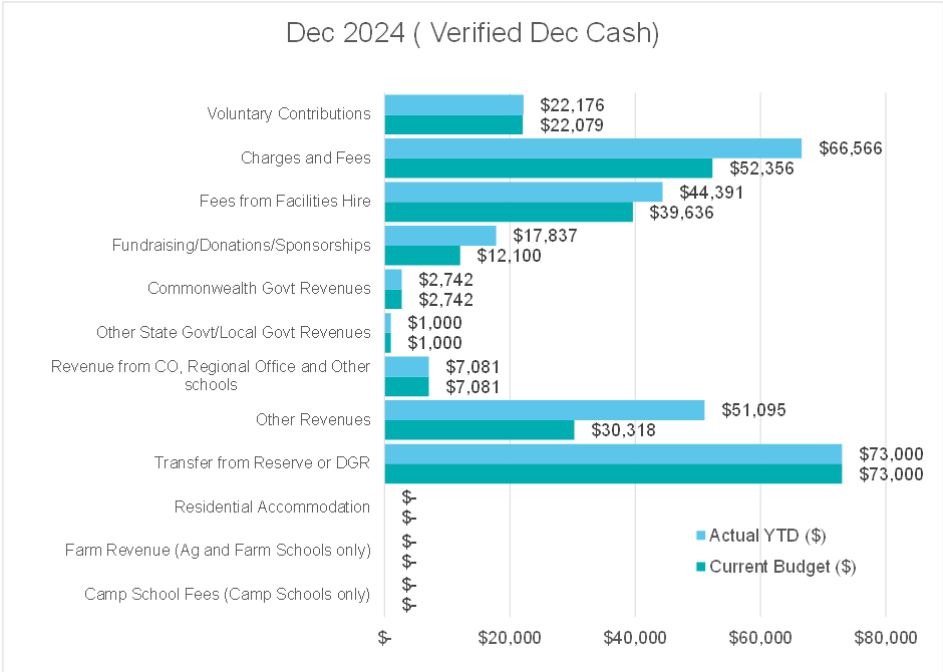


Beeliar Finances

Financial Reporting at 31 December 2024

Beeliar Primary School's finances are overseen by the Finance Committee, which includes the Principal, Manager of Corporate Services, and representatives from both teaching and non-teaching staff. This committee reviews financial matters and makes recommendations to the School Board on Contributions and Charges, Additional Cost Items, and the Annual Budget. The School Board receives regular updates on the school's financial status.

ONE LINE BUDGET - Dec 2024 (Verified Dec Cash)		
	Current Budget (\$)	Actual YTD (\$)
Carry Forward (Cash):	52,027	52,027
Carry Forward (Salary):	313,091	313,091
INCOME		
Student-Centred Funding (including Transfers & Adjustments):	5,430,464	5,430,464
Locally Raised Funds:	240,313	285,888
Total Funds:	6,035,894	6,081,469
EXPENDITURE		
Salaries:	5,171,828	5,171,828
Goods and Services (Cash):	491,054	493,181
Total Expenditure:	5,662,882	5,665,010
VARIANCE:	373,012	416,459





Beeliar Primary School
86 The Grange
Beeliar 6164